



# The Emmaus News

Columbus Indiana Area Emmaus Community, Inc.

VOLUME 23 ISSUE 8

AUGUST  
2015

## Letter to the Community:

Dear Emmaus and Chrysalis Communities,

It's hard to believe that August is here. If you are like me, you're scratching your head and wondering where summer went? I hope you had a blessed summer full of Family, Fun and good Christian Fellowship! I know you've been busy because our July Gathering attendance was low. But that didn't stop the blessings and fellowship we had.

We will commission Evan and Emma Guse and their teams for the upcoming Chrysalis Flights. Please make plans now to come and support them by sending them off to do God's work with prayer and community blessing at the next Gathering on August 21 at 7 pm @ First Baptist Church in Columbus.

Here are some ways you can get involved in the Fall Walks:

- **Be a Prayer Partner.** You can begin praying now for one of the 36 Pilgrims on either the Men's or Women's Walks. You will be assigned a number, but eventually given a Pilgrim's name corresponding to that number so you can write an Agape Letter, letting them know that you've been praying for them. To become a Prayer Partner, contact Phil Newton at [pnewton@columbusinemmaus.org](mailto:pnewton@columbusinemmaus.org).
- **Be a part of the 72 Hour Prayer Vigil during the Walk.** Slots are open and if you have a particular time of day you would like to pray, then sign up now before that slot is filled. Contact Renee Kasting at [rkasting@columbusinemmaus.org](mailto:rkasting@columbusinemmaus.org) or go to [www.columbusinemmaus.org](http://www.columbusinemmaus.org) to sign up.
- **Make Agape.** Do you remember those nice little surprises that were left on your bed and table to remind you of God's Love? Do you need ideas for Agape? Agape on Pinterest has lots of ideas.
- **PRAY!** The most important thing you can do is pray for the teams, Pilgrims, and Sponsors. Applications are available on the website. Read Phil Newton's newsletter article for ideas to help you sponsor a Pilgrim. If you have any questions, contact Cindy Massey, the Registrar, at [cmassey@cdolumbusinemmaus.org](mailto:cmassey@cdolumbusinemmaus.org).

## Dates for Upcoming Walks & Flights

Chrysalis Flights #57 & #58  <i>Application Deadline</i>	September 5-7 2015  <i>August 28</i>
Men's Walk #97  <i>Application Deadline</i>	October 15-18 2015  <i>September 15</i>
Women's Walk #98  <i>Application Deadline</i>	October 22-25 2015  <i>September 22</i>

Continued on page 2

*Continued from page 1*

Even though I'm a little sad that summer will soon be over, I look forward to fall and all that the Lord has in store for our Community through the upcoming Flights and Walks. If you want to get involved and you are not sure how, then e-mail me and I'll get you connected to the right person. Many hands make light work and what a blessing you will receive!

DeColores,  
Mary Miles, Emmaus Community Lay Director

## **SPONSORSHIP (Part 2)**

*This article is a continuation of last month's article on sponsoring a Pilgrim. As the time draws near for us to pray about who we are going to sponsor for the upcoming Fall Walks, please refer to these articles to familiarize yourself with the process. Good sponsorship means God has inspired you or your congregation to sponsor someone who will benefit from this experience just as you did.*

### **When Talking About the Walk to Emmaus with a Potential Pilgrim**

- **There is much you can tell them about the Walk.** Share what your weekend meant to you and how Christ has used that experience to draw you closer to Him and empower you for ministry.
- **Please do not keep things from the potential pilgrim** when sharing with them about the Walk. Answer all questions simply and directly. Choose your words carefully about certain aspects of the weekend, but do not tell "little white lies!" If pressed, answer all questions completely. It helps to rehearse your answers to the questions you are concerned about. A Pilgrim's Walk experience is not dependent on what they already know. Their unique experience will be the active work of the Holy Spirit in their lives, meeting them where they are on their Walk. For some individuals, knowledge of what will be happening is essential for them to be able to "let go" and "let God in."
- **Here are some things you can tell your Pilgrim:**
  - ◇ The Walk is a series of fifteen (15) talks, ten (10) by lay speakers and five (5) by clergy. The talks are based on God's love and grace, and they outline how His love and grace works and fits in our lives. The talks follow prescribed outlines to ensure essential content is consistent on all Walks, but are personalized by the life experiences of those individuals giving the talks.
  - ◇ Most of the time is spent in a conference room and you will be at a table with 5-7 others through the Walk.
  - ◇ There is time to pray, share, sing, laugh, cry, and receive communion. There are extremely solemn moments and there are extremely silly moments. There is some good time for solitary prayer and meditation.
  - ◇ The food is delicious and plentiful.
  - ◇ The atmosphere is casual. Pack comfortable clothing. No one will care if you don't put on make-up (women) or shave (men).
  - ◇ The Walk is an opportunity for the Pilgrim to step away from day-to-day busyness for a personal time with God.

*Continued next page*

- **It is human nature to fear the unknown**, so please reassure your Pilgrim about any concerns they might have.
- **Make sure you have not set false expectations** about what the Walk will mean to your Pilgrim. (Emphasize “Don’t anticipate” with them.) Remember, their experience will not be your experience.
- **It is highly recommended you encourage spouses to sign up at the same time.** It works best if both attend Walks in the same general time frame, and for both Pilgrim and spouse to be ready to attend. If only one is interested in attending a Walk, it is imperative their spouse be supportive of their decision. In these cases, it is important to not treat the non-attending spouse as an “outsider.” Be sure to offer your assistance to the spouse while the pilgrim is on their Walk. You might encourage them both to attend a Gathering service so they can see what Emmaus worship entails.
- Explain to the pilgrim that in Emmaus, **Holy Communion is understood to be open to Christians of all denominations as a sacrament instituted by Christ.** Be sure they understand Holy Communion is served daily, and ask them if this poses a problem for them in participating. Advise them to discuss this with their priest or pastor if they are uncertain of their denominations or church position on Holy Communion or the Eucharist.
- **Don’t push:** Remember, as hard as it may be for you in wanting to sponsor that individual, they must choose for themselves to go, or not to go, and you need to respect their decision. If they decide to go, it will be when they, and God, are ready. Remember, patience is one attitude of love. (1 Cor. 13:4)
- **Let the potential Pilgrim know the Walk to Emmaus involves a 3-day commitment,** beginning with check in at 6:30 p.m. on Thursday evening and ending about 6:00 p.m. Sunday night.
- **You can help eliminate barriers for your Pilgrim** attending the Walk by volunteering to take care of their children, feed the pets, etc. This is where AGAPE love starts to be seen by the Pilgrim – *You would do that for me?*
- **If finances are a barrier for your Pilgrim,** let them know about the availability of scholarships possibly through their church or the community. I know in some cases the Sponsor will be willing to help support the Pilgrim with a portion or all of the cost of the Walk. Again, this is a wonderful opportunity to show your AGAPE love for the person God has called you to sponsor. Be sure to include the pilgrim’s application and check covering the cost of the Walk. The current fee is \$100.00. You can make a payment of \$20.00 to hold the position for the walk with the remaining amount due at the time of the walk.

*Continued next page*

### **Change of Information**

If your mailing address, phone number, or e-mail address has changed, then please let us know. Email your change to [addresschange@columbusinemmaus.org](mailto:addresschange@columbusinemmaus.org) or contact any Board member.

### **Approximately 4-6 Weeks before the Walk:**

#### **• Agape Letters:**

- ◇ **First and foremost pray** for God to direct you in whom to ask to write letters for your Pilgrim.
- ◇ **Discretely find out names and addresses or phone numbers, of these family members and close friends of your Pilgrim.** You can ask the spouse for contact information of one or two close friends and relatives who might be interested in writing a letter. You can then ask these people for others names and addresses of those who might want to participate. That way, if the spouse has not been on a Walk, he/she will not completely know the scope involved, and it will still be a surprise for his/her Walk. For single Pilgrims, you may need to ask them directly for the names of a few family members and /or close friends. This is a good practice anyway, in the event of an emergency where you may need to contact someone on your Pilgrim's behalf.
- ◇ **Important: Ask your Pilgrim's spouse to write a letter.** It is also good to get letters, drawings, etc. from their children; in the case of small children these "letters" may all be put into one envelope.
- ◇ **Write or call close friends and relatives of the pilgrim** and ask them to write an Agape letter. You will need to explain what it is, and what it's for. You may attach a sample letter you've written to prior Pilgrims you've sponsored. This may help them understand what they could write. Lay the groundwork. God will take care of the rest!
- ◇ **Instructions for letter writers:** The letters are "love" letters to the Pilgrim. Writers are encouraged to share those things which have made the Pilgrim special to them, memories, thank them for things they may have never told them before, point out the Pilgrim's good qualities and attributes, etc. Ask them put their letter in in a sealed envelope with the Pilgrim's first and last names on the envelope. In the upper right hand corner of the envelope, ask them to put one of these codes:
 

* Spouse	* Sibling	* Grandparent	* Friend
* Child	* Parent	* Other Family	* Church Family
- ◇ **Have them put their envelope inside another envelope and mail it to you.** If you receive this letter via e-mail, you will need to complete the tasks listed above. Therefore, it is important that you find out as much information about the person sending the letter so that you can code the envelope correctly.
- ◇ **Important:** Let the letter writer know that only the Pilgrim will read it. Remind them that the letter is a surprise and not to mention it to the Pilgrim until after the Walk.
- ◇ **Give them a deadline for mailing their letter to you.** The deadline should allow enough time to follow up on letters you haven't received but are expecting.
- ◇ **Keep in regular contact with your Pilgrim** to make sure they still plan on attending the Walk. Help resolve any problems that might prevent them from attending.

*Continued next page*

**Even if you are not sponsoring a Pilgrim, you can still have an impact on a Pilgrim**

- **Sign up on the Pilgrim Prayer Partner Chart** to be assigned a number that corresponds with a Pilgrim yet to be identified. This chart is available at the Gatherings, held every third Friday of the month. If you cannot attend a Gathering, then contact me (Phil Newton) at [pnewton@columbusinemmaus.org](mailto:pnewton@columbusinemmaus.org) and I will give you a number. Once the Pilgrims list is completed, the Pilgrim you have been praying for will be identified to you so that you can continue to pray for him/her throughout their 72 hour journey.
- **Additionally, sign up on the 71-hour prayer vigil for your Pilgrims Walk.** These charts will also be available at the monthly Gatherings for your sign up opportunity. Remember how you felt when you saw the chart on your walk – this is a true sign of AGAPE Love!

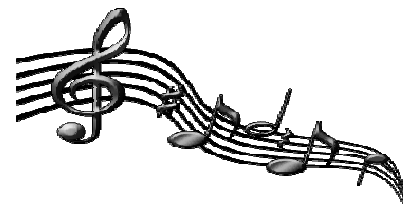
De Colores,  
Phil Newton, Sponsorship & Reunion Groups

**MUSICIANS NEEDED**

Has God gifted you with musical abilities? Are you interested in using those musical abilities to serve Him? Music is a key element of the Emmaus community. In addition to the music teams for the Spring and Fall Walks, there are nine (9) Gatherings throughout the year for which a music team is assembled. That's a lot of opportunities!

We continue to update our database of musicians in the Columbus IN Emmaus community. We need as many musicians involved as possible.

If you love to sing or if you play an instrument (or both) and would like to share your gifts with the Emmaus Community, then contact **Brian Teater** at **812.701.9955** or [bteater@columbusinemmaus.org](mailto:bteater@columbusinemmaus.org).



**CHRYSALIS REGISTRATION DEADLINE IS AUGUST 28TH**



**Don't miss the opportunity to be a blessing to a young person you know.**

**Get an application form on our website or contact John Shoemaker, Chrysalis Registrar**

[jshoemaker@columbusinemmaus.org](mailto:jshoemaker@columbusinemmaus.org)

(812) 988-2310 or (812) 340-3188

**DeColores**

**COLUMBUS INDIANA AREA  
EMMAUS COMMUNITY, INC**  
P.O. Box 2184  
Columbus, IN 47202-2184

[www.columbusinemmaus.org](http://www.columbusinemmaus.org)



[www.upperroom.org](http://www.upperroom.org)



**August Community Gathering - 7 pm**

**Friday, August 21, 2015**

**First Baptist Church**

3300 Fairlawn Dr., Columbus IN  
A-L bring snacks and drinks

**Future Community Gatherings**

**Sept 18** - Trinity United Methodist (Seymour)

**Nov 20** - St. Peter's Lutheran (Columbus)

**Board Meetings @ The Rock**

3990 Rocky Ford Rd., Columbus, IN

**Chrysalis** - Tuesday, August 4 at 6:30 pm

**Chrysalis** - Tuesday, September 1 at 6:30 pm

**Emmaus** - Saturday, August 8 at 9:00 am

**Emmaus** - Saturday, September 12 at 9:00 am

**Men's Walk #97 Team Training (Mark Kelly - LD)**

**August 28 & 29** - St. Peter's Lutheran (Columbus)

**September 11 & 12** - St. Peter's Lutheran (Columbus)

**Women's Walk #98 Team Training (Debbie Frey - LD)**

**September 11 & 12** - (Columbus)

**September 25 & 26** - (Columbus)

**Columbus Indiana Area Emmaus Community, Inc.**

[www.columbusinemmaus.org](http://www.columbusinemmaus.org)

**Emmaus Information Page (for community members)**

[www.columbusinemmaus.org/emmaus/members](http://www.columbusinemmaus.org/emmaus/members)

**User name:** columbusemmaus      **password:** 4thday