



# The Emmaus News

Columbus Indiana Area Emmaus Community, Inc.

## Letter to the Community:

VOLUME 19 ISSUE 4

APRIL  
2011

Happy Spring to all my brothers and sisters,

It is here! Grass is starting to green up and grow, flowers are poking up and starting to bloom, and trees are budding. Isn't God great and amazing?

So speaking of spring and warm weather now is the time to start planting "seeds" of thought for future walks and flights. God has blessed us with almost full walks this spring!!! Begin by asking God to point you to the people He wants you to sponsor for the fall walks and flights. Let's all keep our eyes and ears open to Gods leading. It's not too early.

1Cor. 3 v. 6 says I planted the seed, Apollos watered, but God made it grow. God's work involves many individuals with a variety of gifts and abilities. There are no superstars in this task, only team members performing their own special roles. So let's get planting!!!

Have a wonderful spring and a glorious Easter. See you all soon at the spring walk activities.

Men's send off March 31 at 7pm  
Candlelight April 2 at 8pm  
Closing April 3 at 3:30pm

Women's send off April 7 at 7pm  
Candlelight April 7 at 8pm  
Closing April 10 at 3:30pm

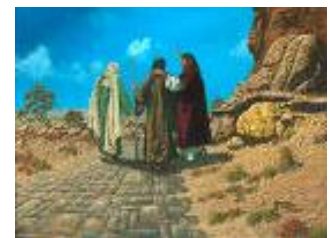
Also see you next month @First Christian Church for the pitch-in gathering for our new members of the Emmaus/Chrysalis family.

Decolores, Cindy Massey

"Trust in the Lord with all your heart and lean not on your own understanding, in all your ways acknowledge Him, and He will make your paths straight." Proverbs 3:5-6

## Dates for Upcoming Walks & Flights

Men's Walk #79	March 31- April 3, 2011
Women's Walk #80	April 7-10, 2011
Men's Walk #81	October 20-23, 2011
Women's Walk #82	October 27-30, 2011



## It Is All About Sponsorship Agape Love

Agape love is arguably the most important concept in the New Testament. John, the disciple Jesus loved, declared, “God is Love.” That God is agape love. (1 John 4:8 and 1 John 4:16). Jesus’ followers would be known by their agape love (not their theology). Christians are generally taught that agape was a new word coined by the early Christians, as they did not want to use any of the existing Greek words for love because of their associations with other Greek words.

What is Agape? Agape means love. It is a wonderful gift of encouragement to pilgrims to remind them that they are being uplifted in loving prayer throughout the 72 hour weekend. As you make or purchase an agape gift for a pilgrim, it also becomes a blessing to you as you lift the pilgrims and the team to the Lord in prayer.

Who make these gifts of agape? As a sponsor of a pilgrim on a walk to Emmaus weekend, it is generally expected that you will make or purchase gifts of agape for your pilgrim and the team on the weekend. (Remember this is one of the things you agreed to do when you signed the Walk to Emmaus application for your pilgrim.) It is also common for reunion groups to make or purchase gifts of agape for a particular walk. Sometimes certain reunion groups make agape gifts for multiple walks or flights. However, you do not have to be a sponsor or part of a reunion group to make or purchase agape gifts. You just have to have a loving spirit.

Jim Hoppus

### Help Needed at Closing

Help is needed just before closing (about 3:00 pm) on Sunday, April 10th. We need to load the walk supplies into a truck. We will start at the kitchen and then go to the conference room. If you have questions, call Dave Goodner at 812-343-3726.

### Board Positions

It is not too early to consider being on the Emmaus board next year. If you feel a nudge in your heart to serve, pray about it and then contact any board member. They will be happy to answer any questions you have. A list of board member was published in the February newsletter.

### Musicians Needed



Has God gifted you with musical abilities? Are you interested in using those musical abilities to serve Him? Music is a key element of the Emmaus Community. In addition to the music teams for the Spring and Fall Walks, there are nine (9) Gatherings throughout the year for which a music team is assembled. That's a lot of opportunities! **We are interested in creating a database of musicians in the Columbus IN Emmaus community.** We want to get as many folks involved as possible. If you love to sing or if you play an instrument (or both) and are interested in sharing your musical gifts with God and the Emmaus community, please contact Kevin Drerup at **812.375.1722** or **kdrerup@columbusinemmas.org**.

## Meet a New Board Member



**Name:** Carl Weichman                      **Walk:** Columbus IN Emmaus #39  
**Table:** John                                      **Church:** Columbus Free Methodist  
**Board Position:** Supplies                  **Family:** Wife-Teresa, Daughter-Kylie  
**Hobbies/Interests:** Fishing, boating and playing golf. As a family, we coach girls basketball.

**Personal Thoughts on Emmaus and/or serving on the Board:** I feel honored to be asked to serve on the Columbus Emmaus Board. I pray that God will guide me to do as well as the board members before me. I look at this position as another step out of my comfort zone. I have asked God to make me a servant and He has.  
 DeColores, Carl

### 2011 Columbus Chrysalis Board

Chrysalis Lay Director	Erin Koons	ekoons@columbusinemmaus.org
Chrysalis Spiritual Director	Jane Noblitt	jnoblitt@columbusinemmaus.org
Emmaus Lay Director	Cindy Massey	cmassey@columbusinemmaus.org
Emmaus Spiritual Director/Hoots	Brian Buterbaugh	bbuterbaugh@columbusinemmaus.org
Past Chrysalis Lay Director	Teresa Russell	trussell@columbusinemmaus.org
Agape	Peggy Ganus	pganus@columbusinemmaus.org
Big House	Kurt Retrum	kretrum@columbusinemmaus.org
Facilities	Phil Miles	pmiles@columbusinemmaus.org
Music	Jon Humphrey	jhumphrey@columbusinemmaus.org
Music	Doug Sabotin	dsabotin@columbusinemmaus.org
Registrar	John Shoemaker	jshoemaker@columbusinemmaus.org
Secretary	Pam Andrew	pandrew@columbusinemmaus.org
Supplies	Julie Miller	jmiller@columbusinemmaus.org
Team Selection	Karl Evans	kevans@columbusinemmaus.org
Transportation	Joe Clark	jclark@columbusinemmaus.org
Treasurer	Mitch Norwood	mnorwood@columbusinemmaus.org
Youth Board Representatives	Ellen Guse	eguse@columbusinemmaus.org
	Leah Schill	lschill@columbusinemmaus.org
	Tim Galligar	tgalligar@columbusinemmaus.org



[Columbus Indiana Area Emmaus Community, Inc.](http://www.columbusinemmaus.org)

[Home Page:](http://www.columbusinemmaus.org)

[www.columbusinemmaus.org](http://www.columbusinemmaus.org)

[Emmaus Information Page \(for community members\):](http://www.columbusinemmaus.org/emmaus/members)

[www.columbusinemmaus.org/emmaus/members](http://www.columbusinemmaus.org/emmaus/members)

User name: columbusemmaus      password: 4thday

NONPROFIT  
U.S. POSTAGE  
**PAID**  
Columbus, IN 47201  
**PERMIT #307**

**DeColores**

**COLUMBUS INDIANA AREA  
EMMAUS COMMUNITY, INC  
P.O. Box 2184  
Columbus, IN 47202-2184**

[www.columbusinemmaus.org](http://www.columbusinemmaus.org)



[www.upperroom.org](http://www.upperroom.org)

## **No April Gathering**

### **April Chrysalis Board Meeting**

Tuesday, April 5, 2011—6 pm  
Memorial Baptist Church  
2320 7th St., Columbus, IN

### **April Emmaus Board Meeting**

Saturday, April 9, 2011—9 am  
Rocky Ford Free Methodist Church  
3990 Rocky Ford Rd., Columbus, IN

### **April Hoot Rally**

Sunday, April 17, 2011 — 2-4 pm  
Location TBD-check website

### **May Gathering and Fourth Day Meeting**

Friday, May 20, 2011—6pm  
Pitch-in meal at 7pm  
First Christian Church  
531 5th Street, Columbus, IN

